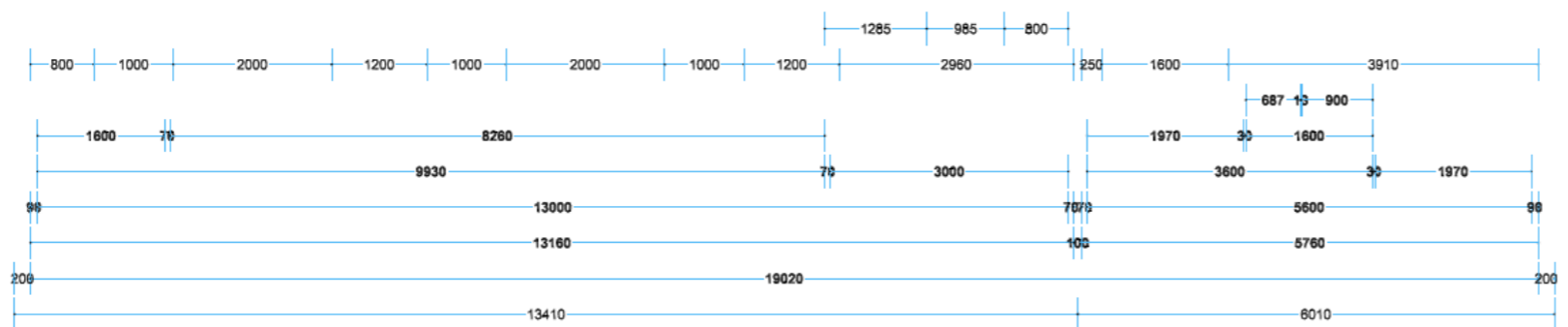
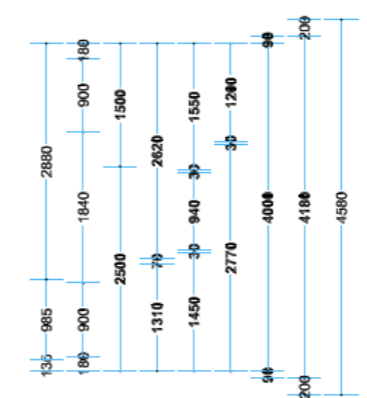
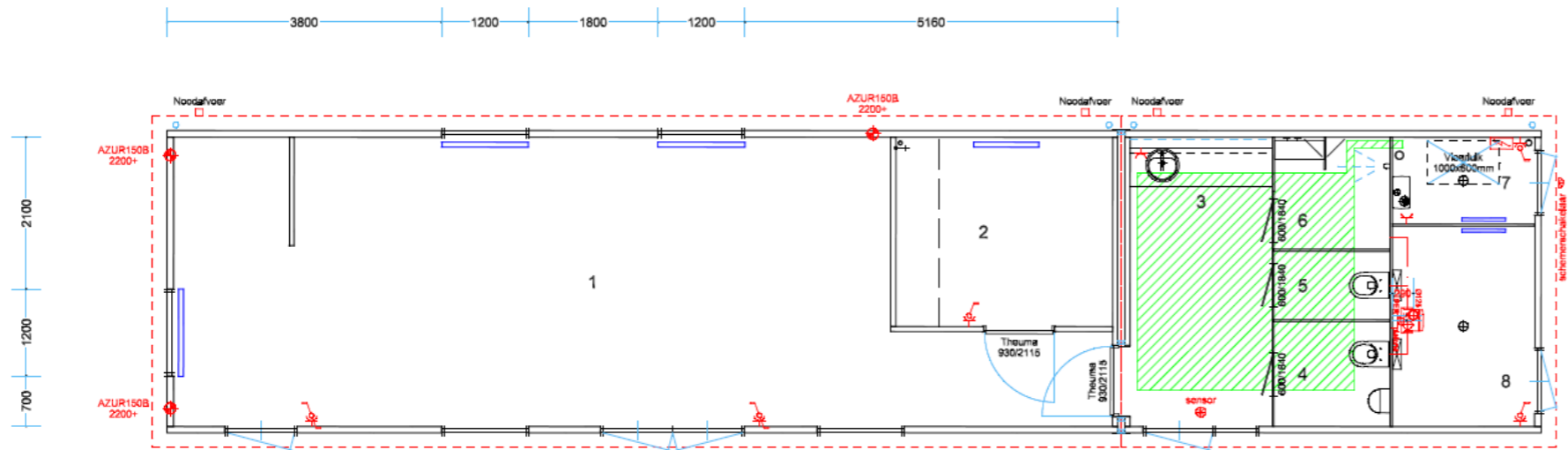
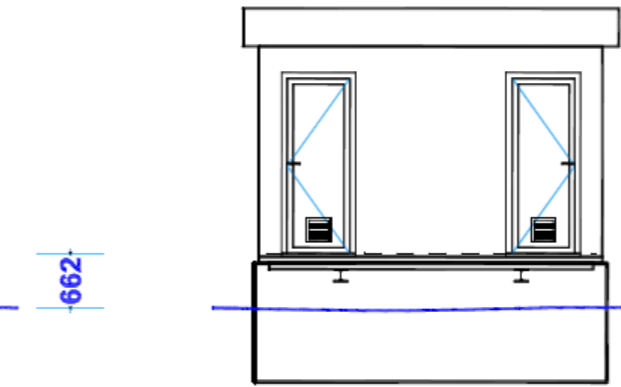
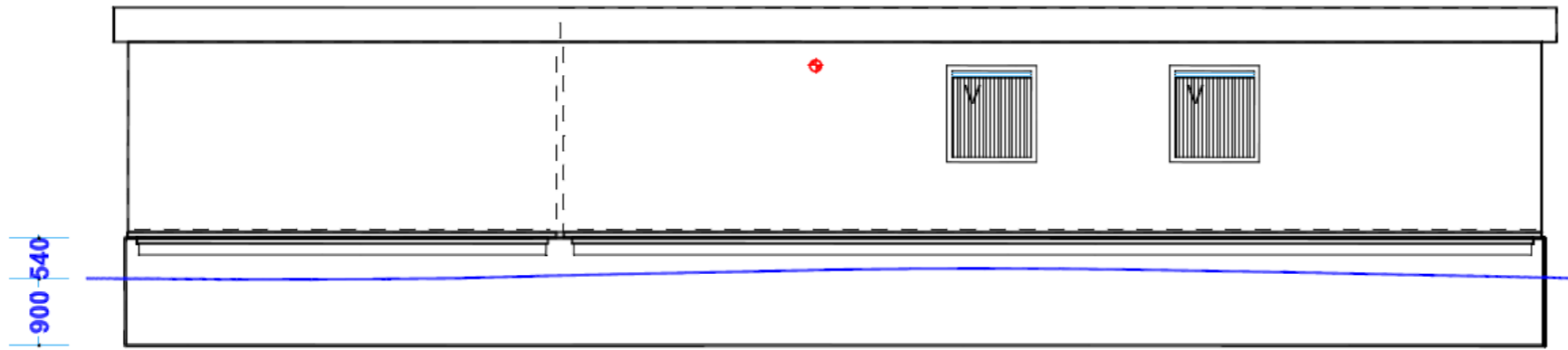


* AANZICHTEN *



- * RENVOOI *
- 1 KANTINE
 - 2 KEUKEN
 - 3 WASRUIMTE
 - 4 TOILET/URINOIR-CABINE
 - 5 TOILET-CABINE
 - 6 DOUCHE-CABINE
 - 7 TECHNISCHE RUIMTE
 - 8 WERKKAST